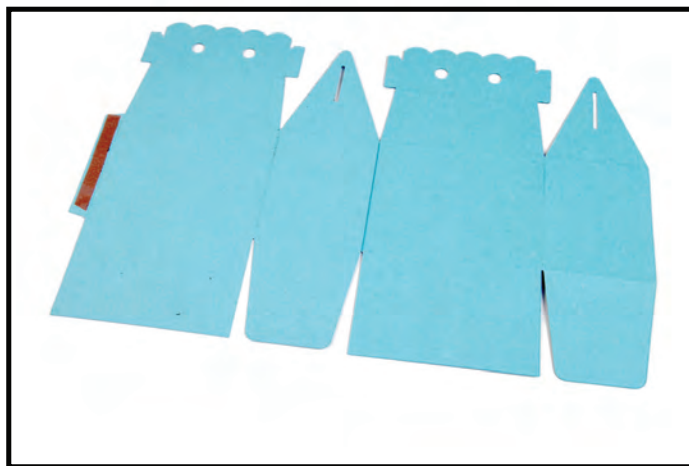


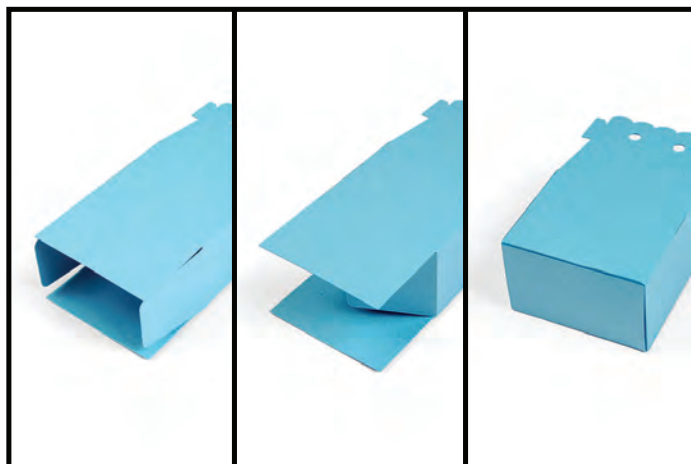
659719 Sizzix® Bigz™ L Die - Box, Scalloped Gable by Lori Whitlock



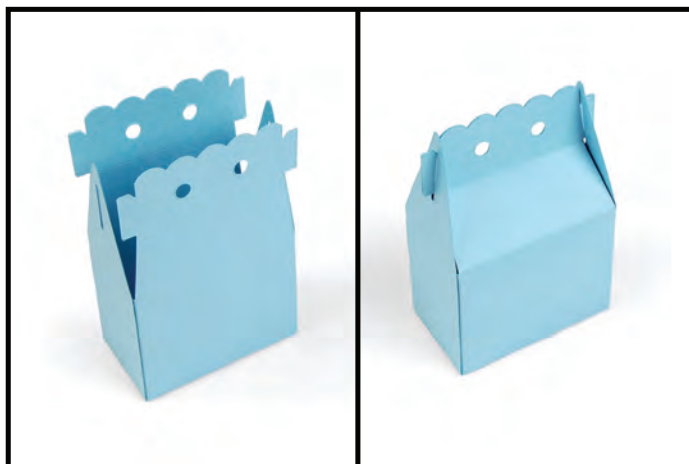
1. Die-cut from desired material and apply adhesive as shown.



2. Connect the two Box pieces along the long tab.



3. Adhere the remaining tab to the opposite edge to create the Box. Close the bottom by first folding in the small flaps, then the two large tabs and adhere in place.



4. Fold front and back panels and insert the tabs into the side slots.



5. Adhere the inner shape to the tag.



6. Tie the Box closed and embellish as desired.