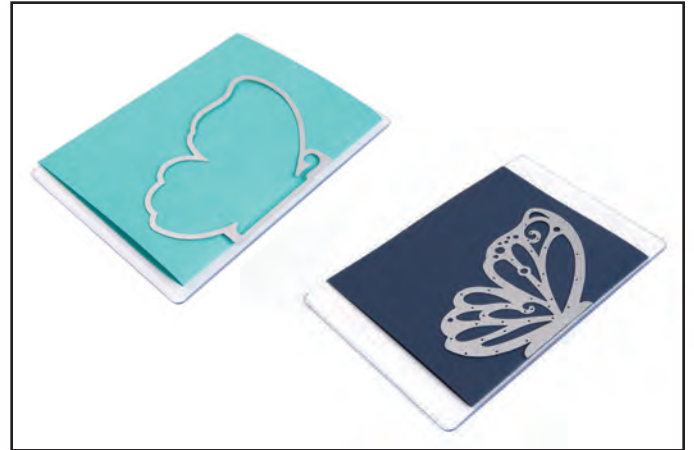




662392 Sizzix® Thinlits™ Die Set - Large Delicate Butterfly by David Tutera™



1. Use the single-fold technique by first folding sheets of paper large enough to accommodate the dies.



2. Align the base edge of each die so that it barely hangs over the folded edge of the paper. Place a second Cutting Pad over the top of the paper and die, and run the "sandwich" through the Sizzix® machine using the appropriate platform configuration.



3. Die-cut the body out of desired material.



4. Assemble, and embellish as desired.